



Investor Presentation

February 2020



Forward Looking Statements

This presentation and all information forwarded hereafter have been prepared solely for informational purposes to assist a prospective purchaser in determining whether he or she wished to proceed with an in-depth due diligence review of the Company. No representations as to the accuracy or completeness of this presentation or any of its contents shall be deemed to have been made.

Certain information set forth in this presentation contains “forward-looking information”, including “future oriented financial information” and “financial outlook”, under applicable securities laws (collectively referred to herein as forward-looking statements). Except for statements of historical fact, information contained herein constitutes forward-looking statements and includes, but is not limited to, the (i) projected financial performance of the Company; (ii) completion of, and the use of proceeds from, the sale of the shares being offered hereunder; (iii) the expected development of the Company’s business, projects and joint ventures; (iv) execution of the Company’s vision and growth strategy, including with respect to future M&A activity and global growth; (v) sources and availability of third-party financing for the Company’s projects; (vi) completion of the Company’s projects that are currently underway, in development or otherwise under consideration; (vi) renewal of the Company’s current customer, supplier and other material agreements; and (vii) future liquidity, working capital, and capital requirements. Forward-looking statements are provided to allow potential investors the opportunity to understand management’s beliefs and opinions in respect of the future so that they may use such beliefs and opinions as one factor in evaluating an investment.

These statements are not guarantees of future performance and undue reliance should not be placed on them. Such forward-looking statements necessarily involve known and unknown risks and uncertainties, which may cause actual performance and financial results in future periods to differ materially from any projections of future performance or result expressed or implied by such forward-looking statements.

Although forward-looking statements contained in this presentation are based upon what management of the Company believes are reasonable assumptions, there can be no assurance that forward-looking statements will prove to be accurate, as actual results and future events could differ materially from those anticipated in such statements. The Company undertakes no obligation to update forward-looking statements if circumstances or management’s estimates or opinions should change except as required by applicable securities laws. The reader is cautioned not to place undue reliance on forward-looking statements.

Mission Statement



ONIT Sciences' mission is improve the health of people, plants and the planet through revolutionary Organic Natural Input Technologies (ONIT).

ONIT Sciences intends to revolutionize the agriculture industry through the proprietary innovation of all natural, organic and non-GMO products. ONIT Sciences provides opportunity and value to our customers and shareholders through research and development of organic green sciences.



About ONIT Sciences

ONIT Sciences has secured a portfolio of intellectual property developed over the past decade

ONIT Sciences is an American company headquartered in Southern California

ONIT Sciences acquires, researches, develops, formulates and monetizes proprietary organic, non-GMO agricultural input technologies

ONIT is expanding operations worldwide through strategic relationships and joint development and marketing agreements

Problem/Solution

PROBLEM:

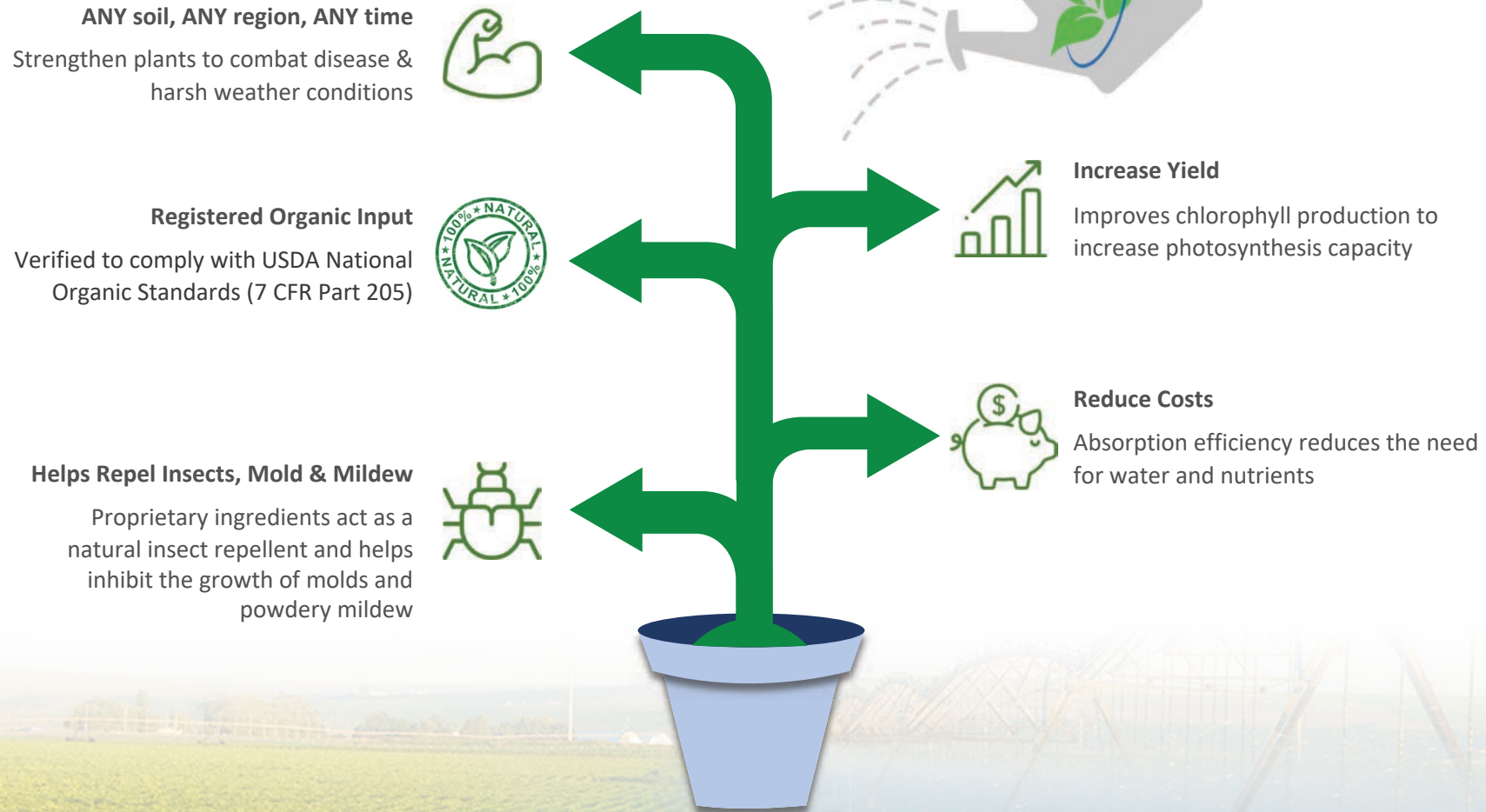
- No plant-based food, supplement or drug should be produced from chemically-grown plants
- Chemically-based growing protocols hurt people, plants and planet
- Cultivator perception is that organic, natural, non-GMO protocols do not provide adequate ROI

SOLUTION:

- ONIT Sciences provides cultivators with organic, natural, non-GMO technologies and products that improve plant health and quality, increase yield and protect ROI

What Farmers & Cultivators Want

ONIT Sciences Delivers!



ONIT Product Family



- **ONIT Grow™** is a proprietary input technology that utilizes a groundbreaking non-GMO, all-organic formulation to dramatically enhance crop growth by stimulating the nutrient and water uptake in plants.
- **ONIT Input Plus** is a scaled-down version of the ONIT Grow product. It contains nano-input technology designed to be used with other nutrients, pesticides, fungicides or other products. ONIT Input Plus allows the immediate delivery of these products at the plant's cellular level and at a significantly reduced price point. ONIT Input Plus, like ONIT Grow, is a registered organic input.
- **ONIT Input** is identical to ONIT Input Plus, but it is comprised of all-natural ingredients that have not been certified organic. It is our lowest priced product.

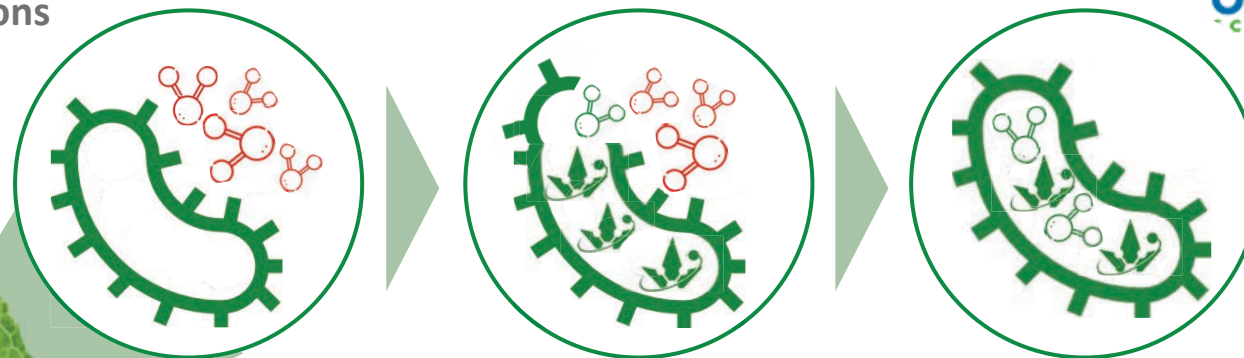
How ONIT Grow™ Works

A nano-surfactant additive to nutrient or fertilizer solutions



ONIT Grow™ is formulated with the highest quality, purified and activated organic matter carbon source. It is a non-ionic input, with beneficial soil health and plant stimulant properties which:

- Acts as an organic nanosurfactant additive to nutrient or fertilizers producers' solutions
- Improves delivery and absorption activity in both soil and plant tissue, thereby dramatically increasing growth potential
- Reduces surface tension on leaves which increases absorption and decreases water requirements



ONIT Grow™ unlocks the full potential of macro & micro nutrients by manipulating their molecular structures

- Breaks surface tension of leaves and soil, allowing plant to breathe
- Penetrates cellular wall and injects directly into chloroplasts
- Converts nutrients to a recognizable form
- Enhances chlorophyll production for greener and healthier leaves
- Optimizes plant oxygen and nutrient uptake
- Improves enzymatic process to stimulate plant immune system



ONIT's secret ingredient is a rare combination of ions and isotopes that is extremely difficult to source

Five Modes of Action

ONIT Grow™ helps unlock the full genetic potential of every plant through its **Five Modes of Action**. These modes of action are the ways in which this dynamic product affects the plant surface, subsurface, roots, soil or substrate and the other nutrient or microbial inputs used in conjunction with ONIT Grow.

- Nano Surfactant
- Emulsifier
- Adjuvant
- Wetter
- Soil Conditioner

Organic Crops: Demand Exceeds Supply

GROWTH

- 2011 – 2016: 56% increase in certified organic farms in the U.S.*
- Sales of certified organic products up from \$3.5 billion to \$7.6 billion, 2011 – 2016*
- Global organic food & beverages market is expected to reach USD 211.44 billion by 2020, growing at a CAGR of 15.7% from 2014 to 2020**

SUPPLY/DEMAND

- Organic Trade Association (O.T.A.) indicated organic food sales were a record \$45.2 billion in 2017, up 6% from 2016
- “... demand for organic commodities exceeds supply and is growing rapidly, which contributes to much higher prices paid for organic ingredients and finished products,” Ron Sterk, Food Business News

Global Organic Food Market Size, By Region, By Value, 2012–2022F



AGRICULTURE ANALYTICS MARKET, BY REGION (USD MILLION)



* Pewresearch.org

** Grand View Research

Potential Partners

Infrastructure, supply and input/nutrient companies all benefit from including ONIT Sciences products to their offerings

Farm Supply Wholesalers

- US Revenues for 2020: \$142 billion
- 12,484 wholesalers in the US
[source](#)

Nutrient & Fertilizer Manufacturers

- The United States Fertilizer Market was valued at USD 13.69 billion in 2018 and is projected to register a CAGR of 2.6% during the forecast period (2019-2024). [source](#)

Agricultural Applicators

- Applicators are responsible for the operation of spray equipment and the effective application of pesticides and fertilizers. They mix, load and apply pesticides and fertilizers to fields at approved applicable rates. [source](#)

Case Study

Kings County, CA

A large grower in Kings County, California is currently testing ONIT Grow™. The following is a scenario analysis for this potential customer.

1,600

Acres

3

Annual Growth Cycle

1 Liter

of ONIT Grow™ per Acre

\$7.4M+

Annual Revenue



Side-by-side grow: Control (using grower's normal input protocols) compared to Control plus ONIT Grow™

	Rooted Clone	Avg height(")	Yields	Total Yield	% Increase
	Starting Height ("") at transplant	After 12 weeks	Weight in Grams	Total yield of each group	yields per group totals

Group A - Control

		28.125		160	x
A1	4.5		39		
A2	3.5		42		
A3	3.5		42		
A4	3.5		37		

Group B - Control

		31		160	x
B1	3		36		
B2	4		40		
B3	4		39		
B4	3.5		45		

Group C - Control + Foliar 5ml/G

		32.5		177	10.63%
C1	4		39		
C2	4		40		
C3	4		40		
C4	4		48		

Rooted Clone

Avg height(")

Yields

Total Yield

% Increase

+ Foliar 10ml/G

31.75

207

29.38%

3.5

51

4

51

4

53

4.5

52

Group E - Control + Root Drench 2.5ml/G & Foliar 5ml/G

		31.75		198	24.38%
E1	4.5		45		
E2	4.5		50		
E3	4		50		
E4	4		54		

Group F - Control + Root Drench 5ml/G & Foliar 10ml/G

		32.75		191	19.38%
F1	3.5		43		
F2	4		47		
F3	3.5		50		
F4	4.5		51		

Group G - Control + Root Drench 2.5ml/G

		30.75		167	4.38%
G1	3.5		39		
G2	3.5		47		
G3	4		39		
G4	4.5		42		

Group H - Control + Root Drench 5ml/G

		30.75		171	6.88%
H1	4.5		40		
H2	3.5		41		
H3	3		43		
H4	3.5		47		

Dilutions of ONT Grow™ noted in milliliters per gallon

www.onitsciences.com

Dilutions of ONIT Grow™ noted in milliliters per gallon

www.onitsciences.com

Product Benefits

Field test results show crop yield increases of up to 47% (varies by crop)



CROP	% INCREASE IN YIELD
RICE	25 to 35
POTATO	21
FLOWERS	30
PASTURES	12 to 27
FRUIT TREES	24
PALM OIL	22
CORN	35
COFFEE	14
COCOA	27
PINEAPPLE	32
AVOCADO	18
TOMATO	24
GREEN BEANS	11

See Appendices for individual crop test results



Financials & Valuations

ONIT Sciences is positioned for rapid growth

Pro Forma Financials	2020	2021	2022
Revenue	\$15,000,000	\$40,000,000	\$100,000,000
COGS	7,500,000	18,000,000	40,000,000
R & D	300,000	300,000	500,000
SG & A	900,000	1,800,000	2,400,000
EBITDA	\$6,300,000	\$19,900,000	\$57,100,000

Approximately
15,000,000 shares
currently issued and
outstanding

Comparable Company Analysis

Organic Supplement Companies, Organic Agriculture Specialty Products, Cannabis Agriculture Suppliers

8-12x

Median Revenue Multiple

x

\$40M

2021 ONIT Sciences Revenue

=

\$320-480M

2022 Expected Enterprise Value

Leadership

- **Chief Executive Officer — Gerry Martin**

Gerry is a professional CEO who has helped hundreds of businesses increase revenue and shareholder value for over 30 years. His executive guidance and financial expertise will be instrumental in propelling ONIT into a leadership position in the organic agriculture market. Gerry holds real estate broker licenses in California, Georgia and Mississippi. With over \$500 million in equity and debt transactions closed during his career, Gerry will help ensure that ONIT is properly capitalized—and captained.

- **President, Chief Marketing Officer— Jeff Moses**

Jeff is a marketing and operations executive who has helped private companies achieve capitalization, revenue and exit goals for more than twenty years. He brings to ONIT a passion for brand building and crystal-clear communications. He is ONIT's public relations point person and a leading advocate for the company's pursuit of a leadership position in Green AgriTech industry. Prior to joining the Company, Jeff founded and served as creative director for a diversified advertising agency whose clients included Volvo, Sun Microsystems, Gateway Computers, Q-Logic, Quantum, Coldwell Banker Commercial, Time Warner Cable, Hyundai and Toshiba. His entrepreneurial spirit combined with his interest in the medical and health/wellness applications of organically grown products make Jeff a perfect fit at ONIT.

Leadership

- **VP Business Development — Kevin Woodbridge**

Mr. Woodbridge brings a wealth of corporate development and finance experience to ONIT Sciences. Beginning with degrees in chemical engineering and business, Mr. Woodbridge started his career in finance with Paine Webber, quickly becoming one of the largest producing executive representatives in Southern California. From there he joined Cruttenden Roth as analyst, reviewing and selecting companies for financing. Mr. Woodbridge was instrumental in financing hundreds of millions for a variety of businesses as a founder and principal of The Michelson Group. More recently, he built his own companies, Cabo Chips and Partida Tequila—both nationally recognized brands. He brings a passion for business development, strategic relationships and finance to ONIT Sciences.

- **Chief Operating Officer — Dennis Locke**

Dennis has been a true believer in ONIT from the first application of ONIT Grow™ on an ailing Meyer's lemon tree in his backyard. Seeing rapid improvement in the little lemon tree's health, he agreed to CFO for the company. For nearly 40 years, Dennis has served as CFO and controller for a wide range of manufacturing and service companies, both publicly and privately. Dennis's duties with ONIT include managing daily accounting functions, compliance and regulatory issues, as well as annual audit and tax work. Dennis holds an MBA and BA in Accounting.

Consultants and Advisors

- **Chief Scientific Advisor — Leyland Minter**

Mr. Minter is a renowned Australian agricultural chemist, product developer and business development expert. He is taking an active role in the research and development of new ONIT products, while also heading the Company's expansion efforts in Australia and New Zealand. He is tasked with assembling a world-class team of scientists to aid in the development, testing and productization of new technologies for ONIT Sciences. Mr. Minter holds a degree in agriculture economics and has worked as Chief Technical Officer with Geigy (now Syngenta) and has consulted with and created products for Dow Chemical and Scotts Miracle-Gro.

- **Board of Advisors — John K. Stroh**

John's advice and experience provide significant value as we move towards institutional financing and secure our position as a leader in the movement towards organic products and practices, particularly in the Health & Wellness and Medical markets. John currently serves as Managing Director – HealthCare Team Leader at Tellson Investment Banking. He has raised over \$2 billion in capital for client companies and advised on over 100 M&A/Strategic Partnering transactions. Prior positions included managing Director Investment Banking at Roth Capital Partners; Managing Director with John Nuveen & Co./U.S. Bancorp Piper Jaffray; President and CEO of Nanospectra Biosciences; CEO of Global Healthcare Advisors; and COO, CFO and SVP at Kadmus Pharmaceuticals. John also served on the Board of Directors and was Chairman of the Finance Committee with Orange Coast Memorial Hospital.

- **Consultant — Dillon Patterson**

Dillon is a master grower with a decade of experience overseeing major grow operations and working with organic microbiological and nutrient product producers. He is instrumental in testing and evaluating ONIT's products and evangelizing their effectiveness to the tight-knit community of master growers. He has been a cultivation consultant for a publicly-traded Canadian producer and a valued speaker at industry events. Dillon holds a Bachelor of Arts degree in business finance.

Summary

- Right products
 - Our flagship ONIT Grow™ product, and our ONIT Input+ and ONIT Input products, answer the need to improve crop production through natural, organic, non-GMO practices.
- Right time
 - The worldwide demand for organically grown crops is at an all time high—and growing steadily.
- Right market
 - ONIT is perfectly poised to take advantage of the Green Revolution in agriculture, with products that improve plant health and yield while providing significant return on investment to customers.

Contact



ONIT Sciences

6 Upper Newport Plaza Drive
Suite 201

Newport Beach, California 92660

www.onitsciences.com

949.317.1811

Appendix A



Field test results using the formulation on rice



Industry Test Results: Rice

Rice – BSMR Ag University, Dhaka, Bangladesh

Crop season: Jan – May 2017

Crop duration: 61 days

Description	Controlled	Applied	Yield Increase
No. of paddy stick/ear (3 plants)	44	55	+ 25%
Count of grains (3 plants)	3656 Grains	6474 Grains	+ 77%
Total weight of field yield	858 kg	1240 kg	+ 45%

Untreated



Treated



Industry Test Results: Rice



Rice – BSMR Ag University, Dhaka, Bangladesh

Cost Benefit Analysis Based on Rice Yield:

- ✓Yield without product: **858 kg**
- ✓Yield WITH product: **1240 kg**
- ✓Yield Increase: 382kg **(44.52% increase in yield!)**
- ✓Average sales price of paddy = **\$ 0.30/kg**
- ✓Additional income = 382 kg x US\$ 0.30 = **US\$ 114.60**
- ✓Farmer's expenses = **US\$ 8.00** (*Product cost + Labor*)
- ✓Net Profit to farmer: US\$ 114.60 – US\$ 8.00 = **US\$ 106.60**
- ✓Cost benefit ratio = **1 : 13.30**

Industry Test Results: Rice



Results

ONIT Science's formulation produced increased plant height size and number of spikes and grains per spike were higher:

- ✓ Effective grains were increased by 5%
- ✓ Total increase in yield of 3.3 ton/hectare when using the product (going from 6 ton/hectare to 9.3 ton/hectare)
- ✓ Yield increase translates into an increase of 55% to farmers' income with application of the product

Appendix B

Field test results using the formulation on corn



Industry Test Results: Corn



Results

- ✓ This test was done to illustrate product's effectiveness under drought circumstances
- ✓ Using the product, producer experienced a yield of 70 bu/acre on non-irrigated plots
- ✓ NOT using the product, due to drought, the yield was 0 bu/acre on non-irrigated plots

Treated crop on left



Untreated crop on right